

Technical Pillar Detail

Using the find tool in Adobe reader type the stand number or exhibitor name, this will highlight the desired stand. If your stand has a pillar this plan will indicate the dimensions of the "No Build Zone", Service boxes and the location of the "No Build Zone" within the stand. "No Build Zones" are indicated in red, these areas must be free from any construction. Service boxes must be left accessible using an access hatch.



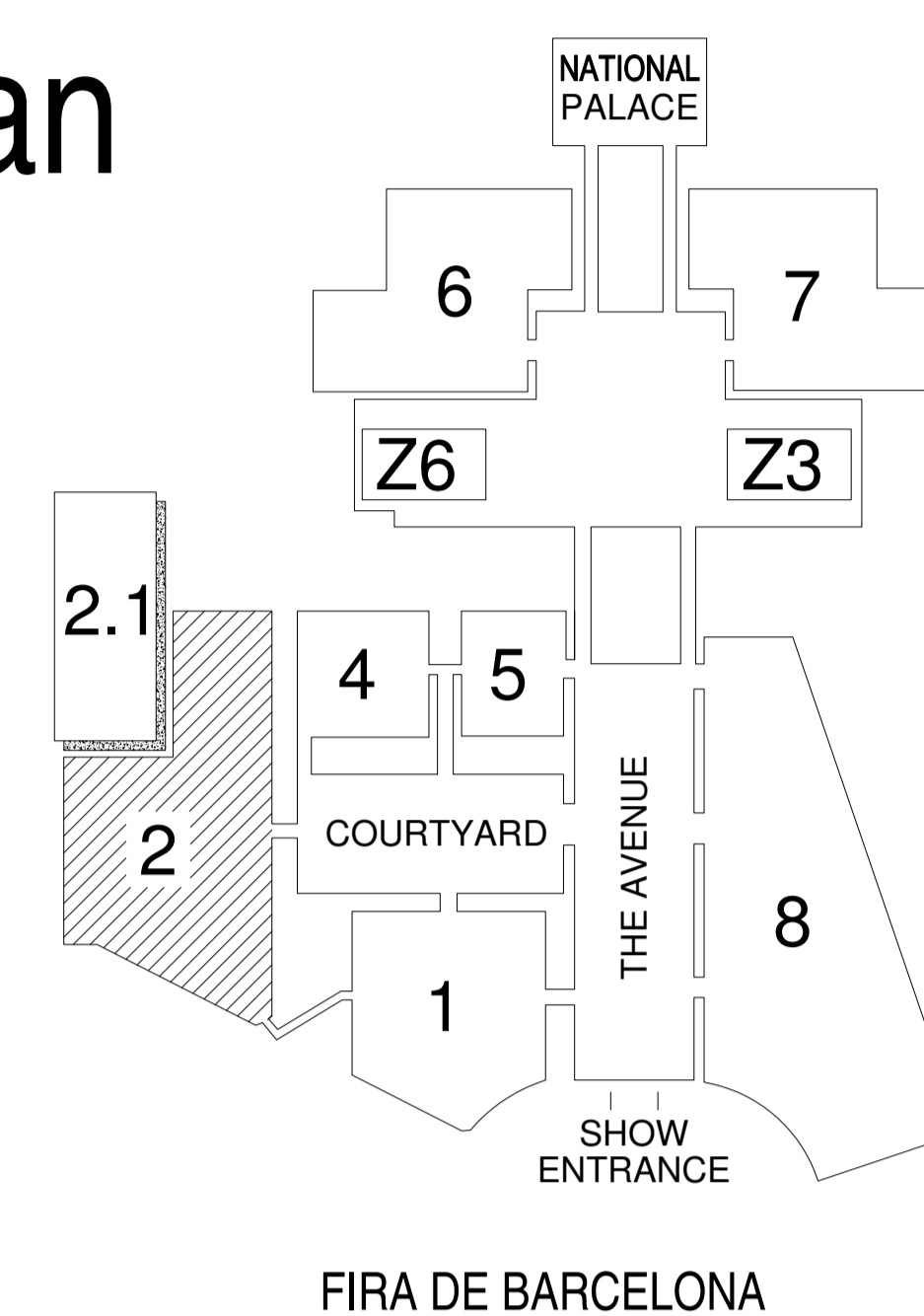
16th - 19th February 2009 | Fira de Barcelona

Please Note:

All exhibitors must submit the health & safety declaration form via the manual by **31st of October 2008**

This plan is not a contractual document. These measurements are provided by La Fira and are not guaranteed by Resolution. Wherever figured dimensions are given they are to be accepted in preference to scaled sizes. The contractors are responsible for verifying all dimensions shown hereon before putting any affected work in hand.

Site Plan



Legend

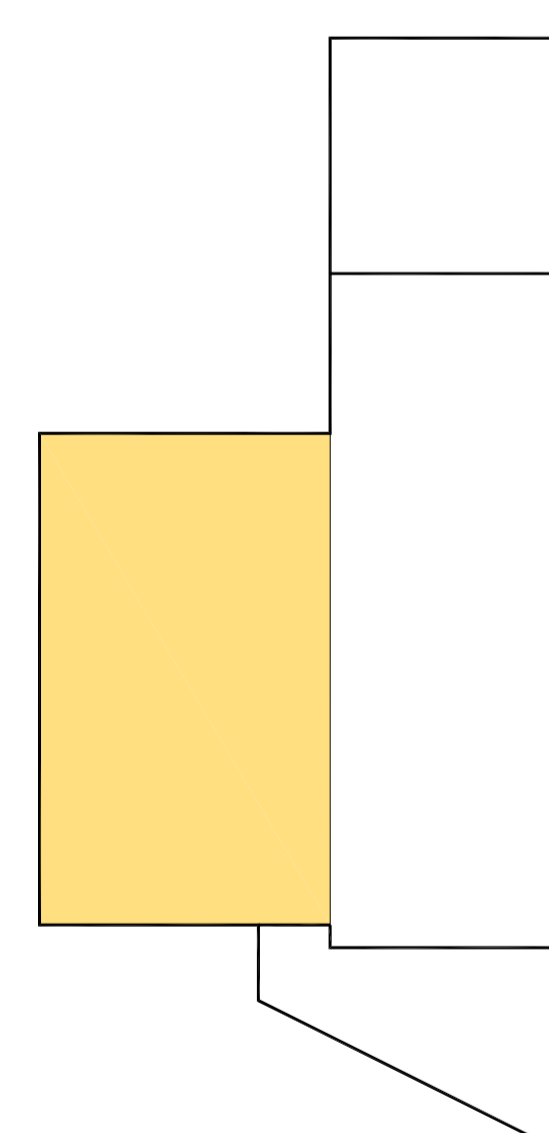
	Service Box (to be left accessible)		Technical Floor Hatch (to be left accessible 605mm x 605mm)
	Electricity connection point 6.6Kw, 220V		Compressed air
	Phone connection point		Drain
	Data connection point		Fire hose
	TV-FM connection point		No build zone around pillar
	Water connection		Drainpipe
	Stand limit on aisle		Stand limit on neighbour

Height Limits

Maximum construction heights are shown in colour below, use the key to determine your stand's maximum construction height. For those with more than one height limits dimensions are given to show exact locations of these limits.

	UP TO 2.9M		UP TO 5.7M
	3.9M TO 5.65M		UP TO 5.5M
	UP TO 4M		UP TO 6M

Weight Limit



White Zone = 5000kg/m²
Orange Zone = 1250kg/m²

Week Commencing: 8th January 2009

Pillar Example



Pillars with Green Numbers

Pillars with Purple Numbers

Pillars with Blue Numbers

Pillars with Orange Numbers

Pillars with Black Numbers